

WENZHOU SAFEWIRE ELECTRIC CO.,LTD.

Address:Liushi town, Yueqing, Wenzhou , Zhejiang,China,325604

Tel:0086-577-61725370

Mail:happyhe@safewirele.com

Wechat:happyhe7806

Skype:happy.he7806

Whatsapp:008618612380398

QQ:1119145917

Web:WWW.SAFEWIRELE.COM



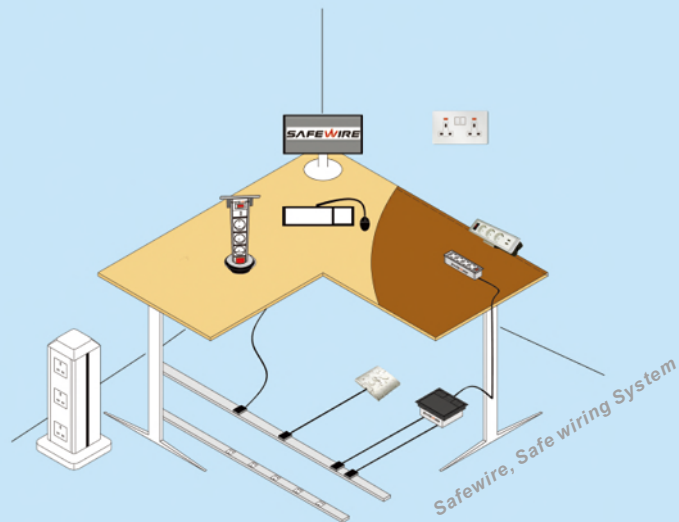
For more details,
please visit:
www.safewirele.com
or scan this QR code.



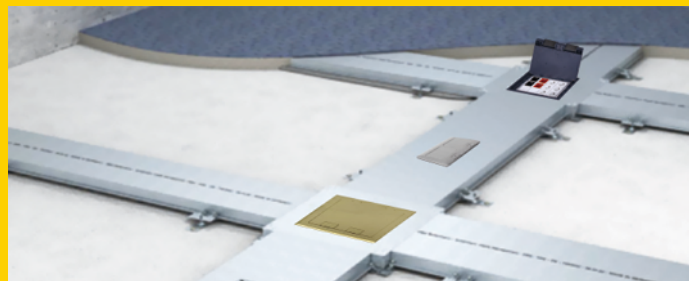
TÜV Rheinland®

20 years OEM factory for almost world-wide brand of floor sockets

 **SAFEWIRE**, Safe Wiring System
Since 1998; 20 years OEM factory for global brand



Floor box / Floor socket / Cable management



Safewire 2024-2025 Season



About Us

WENZHOU SAFEWIRE ELECTRIC CO.,LTD.

We provided OEM and ODM service for most worldwide brands. And exported products & service to over 56 countries in Europe, Australia, Middle East and Southeast etc. When our clients purchase our products, they know they are getting value for their money, with performance, reliability and quality. Every product carries our personal guarantee and service commitment. Our team stands behind every product we sell-even years after it is installed. We now offer reliable years warranty on all Safewire products, covering parts and labor. We have built our reputation on this.

Of course we also have a huge range of shapes, sizes, boxes with IP Ratings and your choice of a metal finish or inlay, all readily available from your local electrical wholesaler. If none of our options are suitable for your application, please contact us about customization solution for you.

The world will keep changing. This is what keeps Safewire ahead. Listening to, and acting on, customer feedback sets our products apart from others. Safewire, On the way!

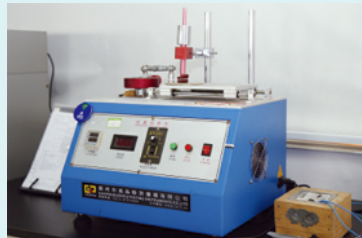
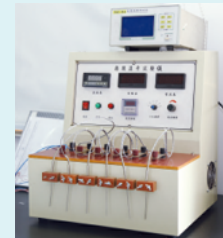
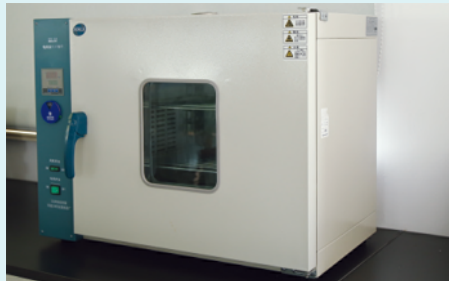


Our Lab

Our object is to deliver professional connected wiring solutions that are based on new business models and offer new services for all kind of applications.

Today, Safewire is an active member of important associations and consortiums in electric industry-both worldwide and on a regional level.

- A) Associations/ Alliances IEC; CQC;
- B) Certification bodies ISO, CE, RoHS, EN/EC,



Equipment

We produce high quality electric products and export all over the world.

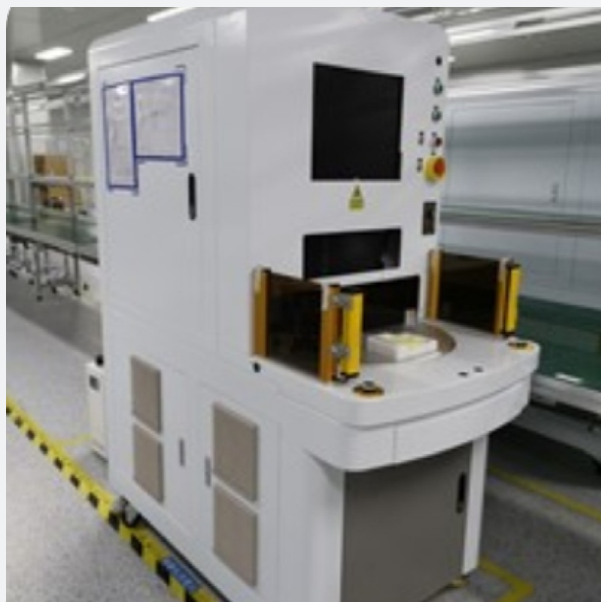
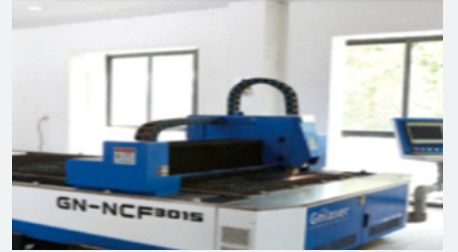
Safewire Cable Management , Power Distribution Electric & Electrician products etc.



Our production facilities include:

- Factory: 30,000 square meters building areas;
- R&D department: 3D design and engineers with vast experience and knowledge.
- Tools department: We have brand new CNC center with erosion machines, trilling machines and saw machines.
- Press department: Equipped with several new press machines for up to 100 t and 10 lathe machines metal cutting and bending machines. etc.
- Galvanization department: Newly refurbished automatic galvanizing line. We can make Ag,Zn, Ni and Tn plating on our metal and copper parts.
- Own independent electrical laboratory--Full routine testing for our own products, 300 sqm of advanced technology lab.





3rd

Party Test Certificate

Although not a mandatory requirement the company supports as a policy that all functional products should undergo a third party test certification process. Please note that our products fulfill type testing to the National Standards GB/T23307 and International standards IEC60884 can demonstrate compliance and product reliability.

CE certificate, report and ROHS certificate



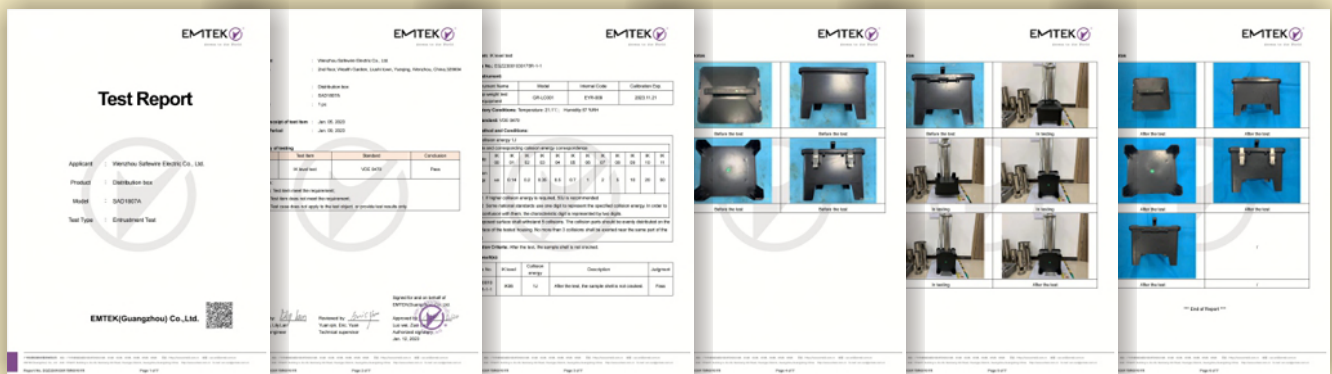
IP55 test certificate and report



FCC, RED Certification



IK test report



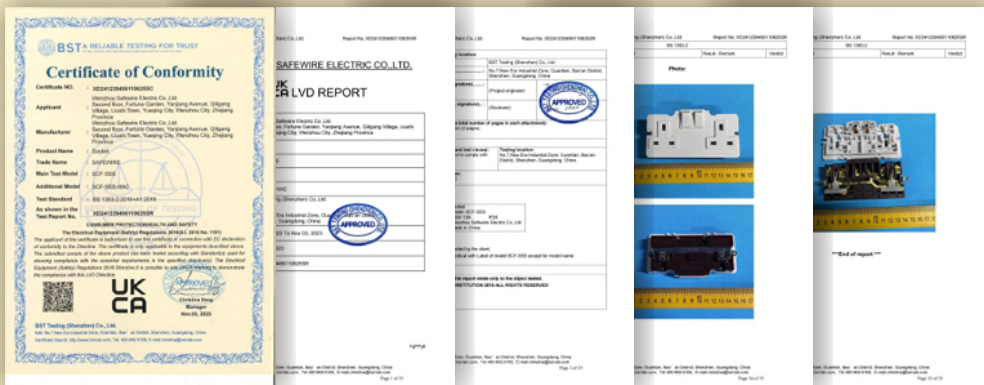
Tuv and CE Certification



Load-bearing force test report



BS1363 UKCA Certification



Patent



Electrical Socket

Floor Socket

Desktop Socket

SCF Series

POP Series

MCS Series

SOB Series

FUS Series

WCD Series

VLD Series

PUD Series

FUD Series



Collection



Distribution Box



Waterproof Box



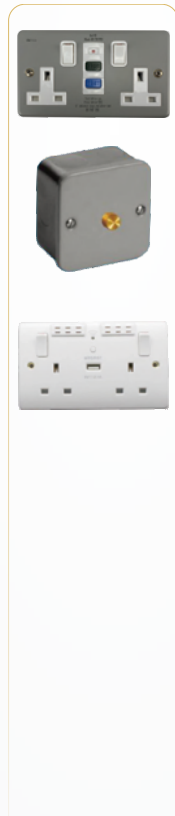
Accessories



45/128 Series Modules



Switch Series



Others Accessories



GUARANTEE OF AFTER-SALE SERVICE

Safewire Electric Co.,Ltd assure that our products are strictly in accordance with the ISO management system ,now we guarantee our products after-sale service as this following :

- 1 Our company guarantees that the products will be strictly inspected before shipped from factory and the QA rate of products will 100%.
- 2 Our company guarantees that within 1 year from date of receipt and finish installation if some problems occure, our company is responsible for replace free of charge.If beyond warranty period, we will provide you with corresponding paid services within a reasonable range.
- 3 Our electrical accessories is guaranteed to give satisfactory performance for life provided the following conditions exist.
 - a.The accessory has been properly installed by a competent person.
 - b.The accessory has been installed in accordance with the wiring regulations and amendments in force at the time of installation, and that it has not been tampered with or subjected to improper or abnormal use.
- 4.This following statutuion will be paid service:
 - * exceeding the warranty period;
 - * failure to provide purchase evidence/documents;
 - * damage caused by failure to use or repair the product as required in the product manual (pay special attention to water inspur into, damage by drop or other not right way by people);
 - * if the customer repairs or disassemblesby himself or by other person who not authorized by our company;
 - * damage caused by wiring with bad quality level communication cables;
 - * failureor damage of products caused by major force such as flood,fire,lightning, eather-quake etc.

When problems occur during the use of the product, our technical engineer will actively respond.Any problem of product quality ,our company will guarantee a clear reply or solution within reasonable time.

Remark: Safewire Electric Co.,Ltd reserves the right to modify, at any moment, in the consumer's best interests, the features and components of its products without prior notice.

Safewire Electric Co.,Ltd



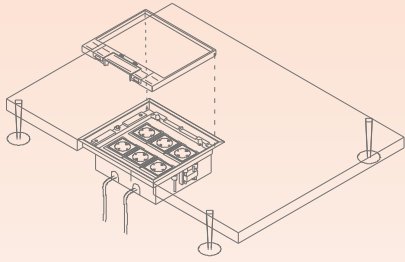
Customized Design & Production

DESIGN SERVICE From "0" to "1"

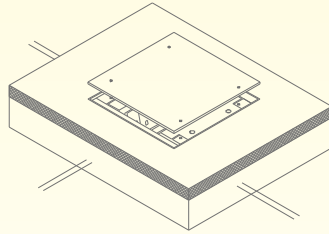
Design service integrating appearance, structure, application and production



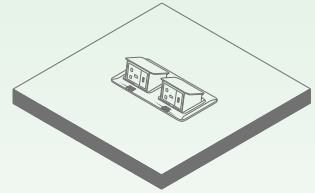
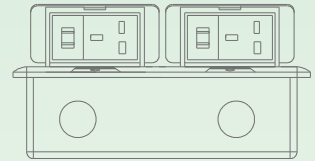
HTD-624AS



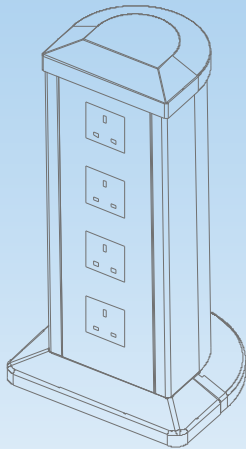
HTD-180



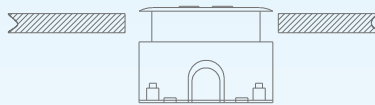
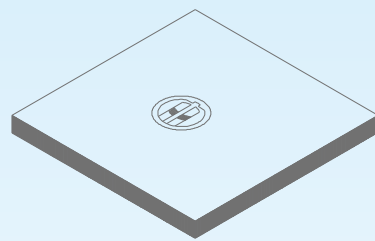
HTD-1602



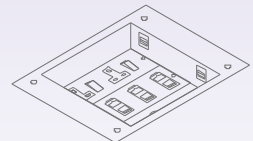
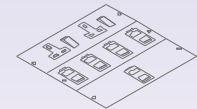
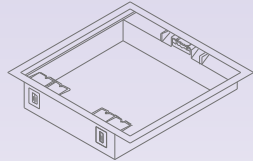
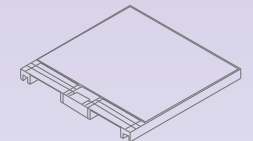
FZ-532



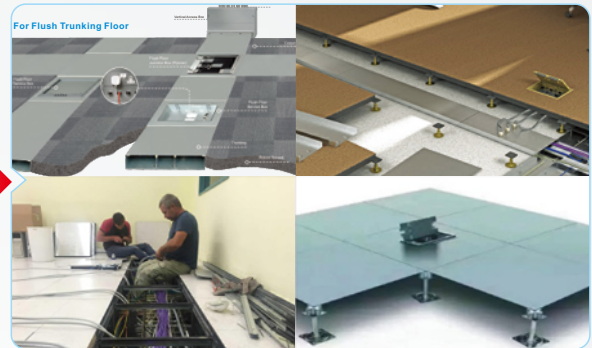
HTD-610S



SCF-A01

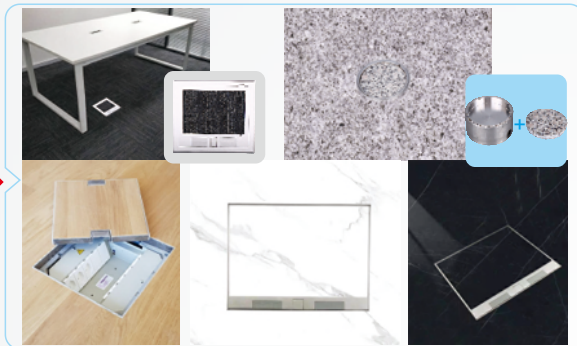


SCF: Underfloor/Raised floor box



P03

POB: Heavy Duty Floor box



P13

SOB: Serviced Outlet Box



P24

FUS: Flip Up socket



P29

MCS: Mini-Columns Socket & utility column



P34

SCF Series Features

1. More capacity



8 Way Modules



12 Way Modules



16 Way Modules

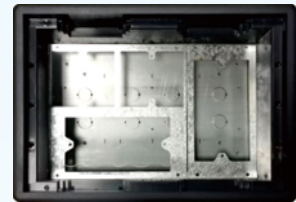


24 Way Modules

A) 4 compartment 77mm bridges of switch socket:



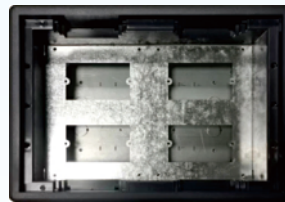
B).3 compartment 146 & 86mm bridges of switch socket:



C).3 compartment 86*77mm bridges of switch socket:



D).1 compartment of 120 bridges of socket and data:



2. More optional box for raised floor or concrete floor:



Galvanized Steel



Plastic Bottom Box



Stainless steel Bottom Box

3. More optional installation:



Horizontal Installation



Side-mounting

4. More optional switch & socket



45*45mm Modules

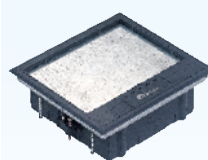


86 Type Compartment

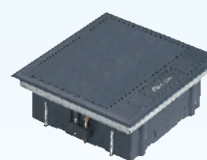


120 Switch Board

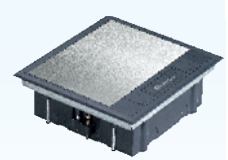
5. More Optional Coverplate:



HTD-XXXAS
Cover middle
can be filled

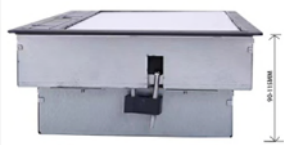


HTD-XXXSS
Filled with
Plastic plate



HTD-XXXSP
Filled with
SUS plate

More optional box



Galvanized sheet metal bottom box



Plastic bottom box

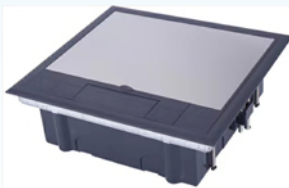


Stainless steel bottom box



Height adjustable to suit your height

More Optional Coverplate:



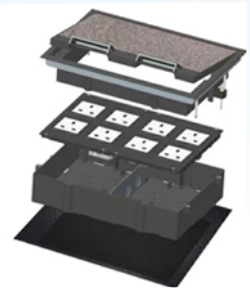
HTD-XXXSP
Filled with SUS plate



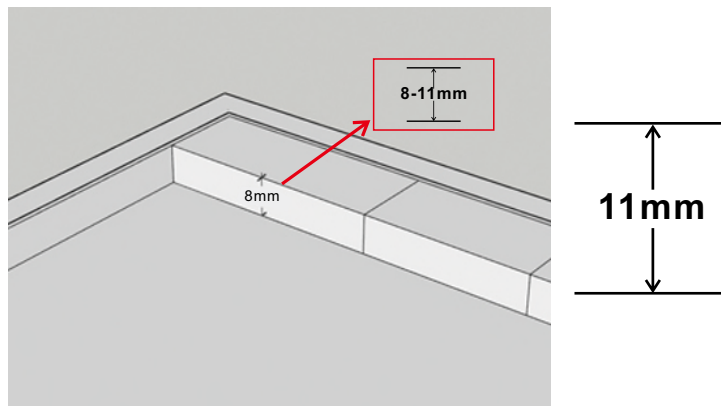
HTD-XXXSS
Filled with Plastic plate



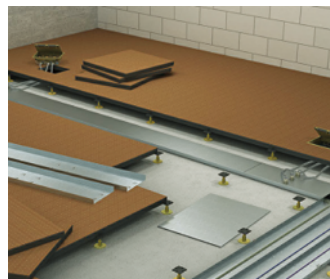
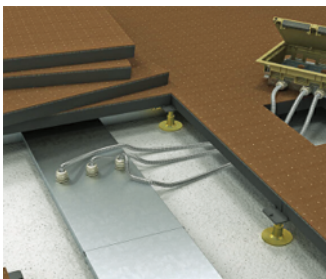
HTD-XXXAS
Cover middle can be filled



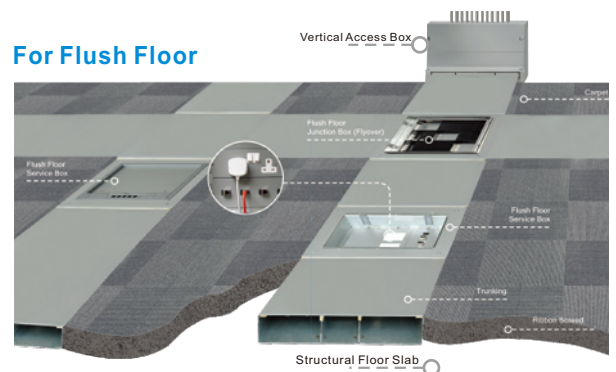
Max. 8/11mm cavity for marble/carpet



For Raised Floor Box



For Flush Floor



SCF: Underfloor/Raised floor box

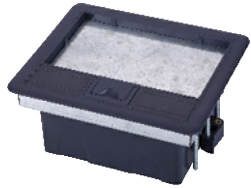
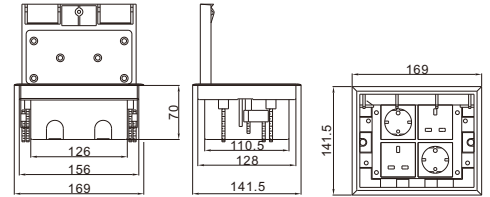


A

HTD-622AS/SS/SP-45

Panel Material	AS	8-11mm Thickness of concavity		
	SS	Plastic		
	SP	Stainless Steel		
Panel Dimension (mm)	169*141.5			
Cutout (mm)	(130-135)*(157-165)*(76-110)			
Capacity Of Modules	8 ways 45modules/86/120 type			
Applicable	Raised floor			
G.W/CTN(KGS)	MEASUREMENT/CTN(CM)	TOTAL(M ³)	Set/CTN	
11.5	41*36*32	0.0472	12	

Outline Drawing:



B

HTD-622-45 Panel Material



HTD-622-AS



HTD-622-SS



HTD-622-SP

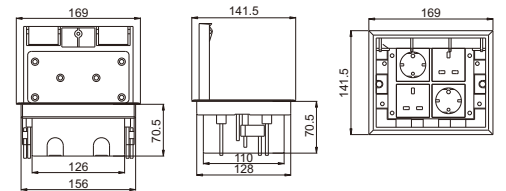


B-H622-C stainless box

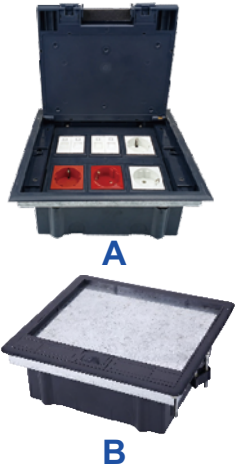
HTD-622AS/SS/SP-C

Panel Material	AS	8mm Thickness of concavity		
	SS	Plastic		
	SP	Stainless Steel		
Panel Dimension (mm)	169*141.5			
Cutout (mm)	(130-135)*(157-165)*(76-110)			
Capacity Of Modules	8 ways 45 type modules			
Applicable	Concrete floor			
G.W/CTN(KGS)	MEASUREMENT/CTN(CM)	TOTAL(M ³)	Set/CTN	
11.5	41*26*32	0.0472	12	

Outline Drawing:



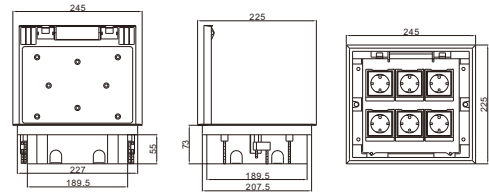
SCF: Underfloor/Raised floor box



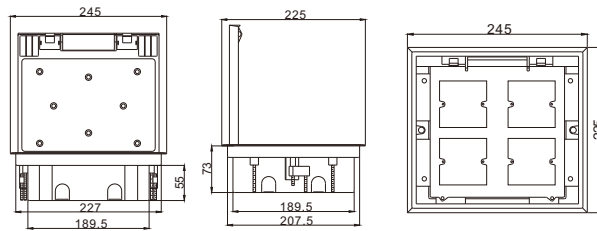
HTD-624AS/SS/SP-45

Panel Material	AS	8-11mm Thickness of concavity	
	SS	Plastic	
	SP	Stainless Steel	
Panel Dimension (mm)	245*225		
Cutout (mm)	(210-215)*(230-235)*(75-100)		
Capacity Of Modules	12 ways 45modules		
Applicable	Raised floor		
G.W/CTN(KGS)	MEASUREMENT/CTN(CM)	TOTAL(M ²)	Set/CTN
11.2	53.5*29.5*48	0.0758	8

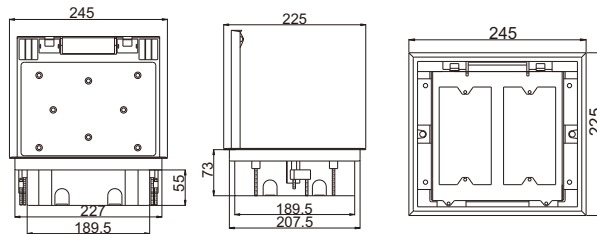
Outline Drawing:



HTD-624AS/SS/SP-86



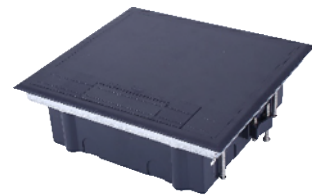
HTD-624AS/SS/SP-120



Panel Material



HTD-624-AS



HTD-624-SS



HTD-624-SP

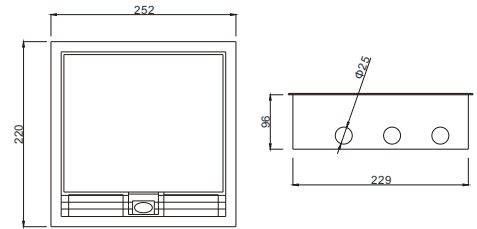
SCF: Underfloor/Raised floor box

HTD-624B



Panel Material	AS	8mm Thickness of concavity		
	SS	Plastic		
	SP	Stainless Steel		
Panel Dimension (mm)	245*225			
Cutout (mm)	213*233			
Capacity Of Modules	86*86mm switch socket*4			
Applicable	Raised floor			
G.W/CTN(KGS)	MEASUREMENT/CTN(CM)	TOTAL(M ³)	Set/CTN	
11.2	53.5*29.5*48	0.0734	8	

Outline Drawing:

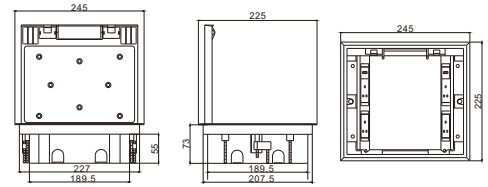


HTD-624C



Panel Material	AS	8mm Thickness of concavity		
	SS	Plastic		
	SP	Stainless Steel		
Panel Dimension (mm)	245*225			
Cutout (mm)	(210-215)*(230-235)*(76-110)			
Capacity Of Modules	12 ways 45modules			
Applicable	Raised floor			
G.W/CTN(KGS)	MEASUREMENT/CTN(CM)	TOTAL(M ³)	Set/CTN	
11.2	53.5*29.5*48	0.0758	8	

Outline Drawing:

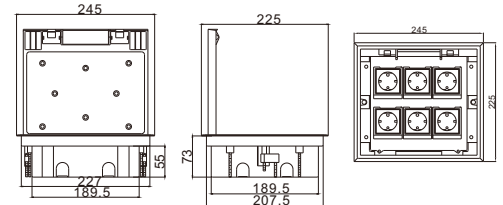


HTD-624AS/SS/SP-C



Panel Material	AS	8mm Thickness of concavity		
	SS	Plastic		
	SP	Stainless Steel		
Panel Dimension (mm)	245*225			
Cutout (mm)	(210-215)*(230-235)*(76-110)			
Capacity Of Modules	12 ways 45modules			
Applicable	Concrete floor			
G.W/CTN(KGS)	MEASUREMENT/CTN(CM)	TOTAL(M ³)	Set/CTN	
11.2	53.5*29.5*48	0.0758	8	

Outline Drawing:



B-H624-C stainless box

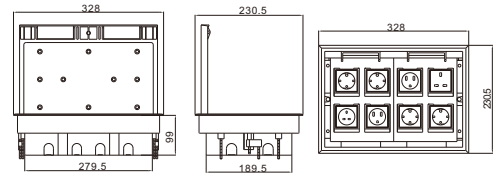
SCF: Underfloor/Raised floor box

HTD-626AS/SS/SP-45

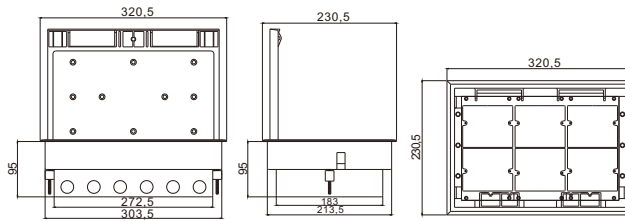


Panel Material	AS	8mm Thickness of concavity	
	SS	Plastic	
	SP	Stainless Steel	
Panel Dimension (mm)	320.5*230.5		
Cutout (mm)	(305-310)*(210-215)*99		
Capacity Of Modules	16 ways 45modules		
Applicable	Raised floor/Screed floor		
G.W/CTN(KGS)	MEASUREMENT/CTN(CM)	TOTAL(M ²)	Set/CTN
16	57.5*27.6*37.2	0.0616	4

Outline Drawing:



HTD-626AS/SS/SP-86

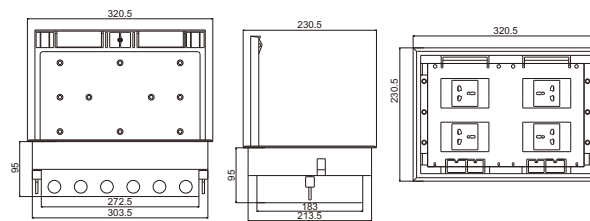


Panel Material



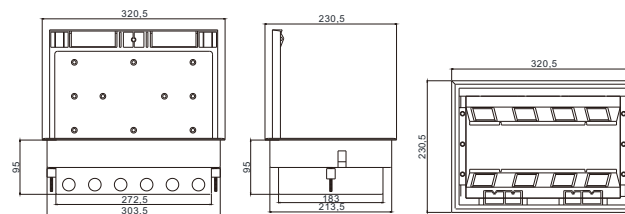
HTD-626-AS

HTD-626AS/SS/SP-120



HTD-626-SS

HTD-626 AS/SS/SP-CK



HTD-626-SP

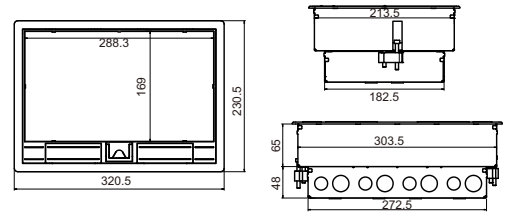
SCF: Underfloor/Raised floor box



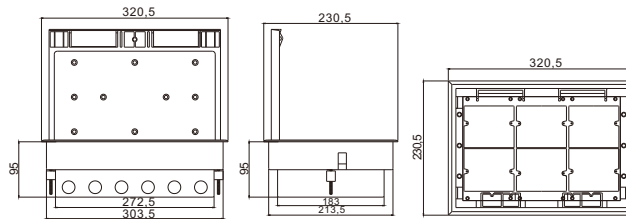
HTD-626B

Panel Material	AS	8mm Thickness of concavity
	SS	Plastic
	SP	Stainless Steel
Panel Dimension (mm)	320.5*230.5	
Cutout (mm)	(305-310)*(210-215)*(76-110)	
Capacity Of Modules	86*146mm module socket *3	
Applicable	Raised floor/Screed floor	
G.W/CTN(KGS)	MEASUREMENT/CTN(CM)	TOTAL(M ²)
16	55*37*29	0.0590
		Set/CTN
		4

Outline Drawing:



HTD-626B AS/SS/SP-86

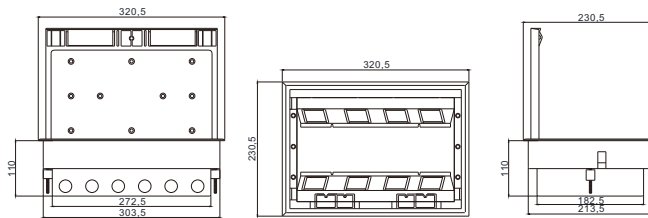


Panel Material



HTD-626B-AS

HTD-626B AS/SS/SP-CK



HTD-626B-SS



HTD-626B-SP

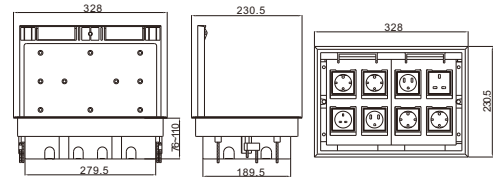
SCF: Underfloor/Raised floor box

HTD-628AS/SS/SP-45



Panel Material	AS	8-11mm Thickness of concavity		
	SS	Plastic		
	SP	Stainless Steel		
Panel Dimension (mm)	328*230.5			
Cutout (mm)	(305-310)*(210-215)			
Capacity Of Modules	16 ways 45modules			
Applicable	Raised floor			
G.W/CTN(KGS)	MEASUREMENT/CTN(CM)	TOTAL(M ²)	Set/CTN	
11.2	52.5*35.5*24	0.0447	4	

Outline Drawing:

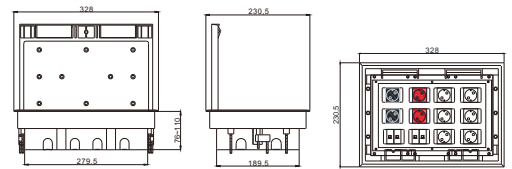


HTD-628AS/SS/SP-4524

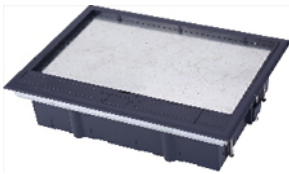


Panel Material	AS	8-11mm Thickness of concavity		
	SS	Plastic		
	SP	Stainless Steel		
Panel Dimension (mm)	328*230.5			
Cutout (mm)	(305-310)*(210-215)			
Capacity Of Modules	24 ways 45modules			
Applicable	Raised floor for ups power supply			
G.W/CTN(KGS)	MEASUREMENT/CTN(CM)	TOTAL(M ²)	Set/CTN	
11.2	52.5*35.5*24	0.0447	4	

Outline Drawing:



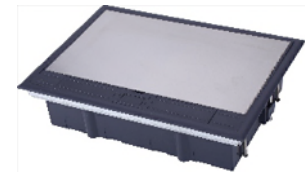
HTD-628-45/4524 Panel Material



HTD-628-AS



HTD-628-SS



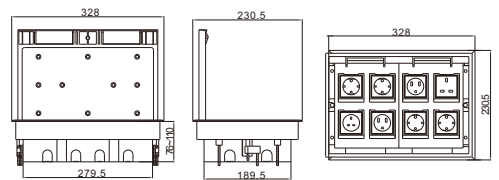
HTD-628-SP

HTD-628AS/SS/SP-C



Panel Material	AS	8mm Thickness of concavity		
	SS	Plastic		
	SP	Stainless Steel		
Panel Dimension (mm)	328*230.5			
Cutout (mm)	(305-310)*(210-215)			
Capacity Of Modules	16 ways 45modules			
Applicable	Concrete floor			
G.W/CTN(KGS)	MEASUREMENT/CTN(CM)	TOTAL(M ²)	Set/CTN	
11.2	52.5*35.5*24	0.0447	4	

Outline Drawing:



B-H628-C stainless box

SCF: Underfloor/Raised floor box

HTD-626B Optional Configuration

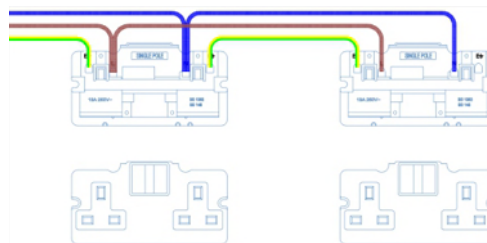
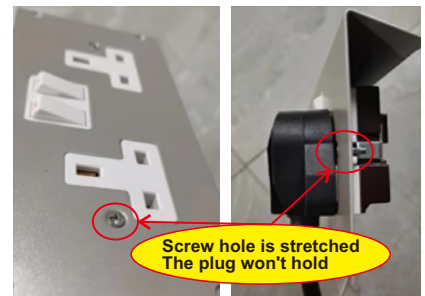
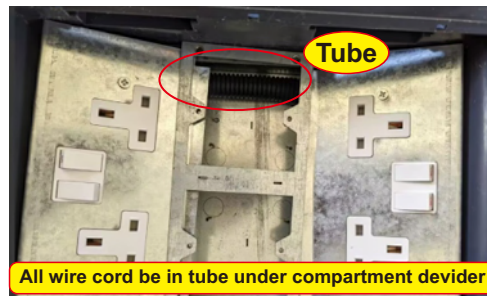
A) 3 compartment

			
146mm side-install&86mm	146mm side-install&45mm	Network module & 86mm&146mm	86mm&Network module
			
120mm bridge	146mm bridge	MCB&146mm Circuit breaker	Item:HTD-626-RCD 146mm bridge

B) 4 compartment


146mm&Network module

C) Selling point



Remark:
 Neutral line: blue
 Fire line: Brown
 Ground wire: yellow-green

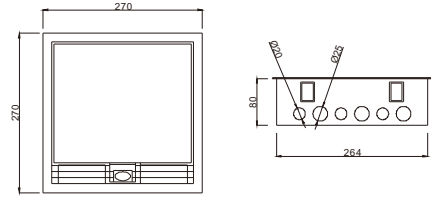
SCF: Screed floor



SCF-A01-146

Panel Material	PC		
Panel Dimension (mm)	270x270		
Cutout (mm)	264x264		
Capacity Of Modules	3compartments/45mm type		
G.W/CTN(KGS)	MEASUREMENT/CTN(CM)	TOTAL(M ³)	Set/CTN
24	59*31*28	0.0512	6

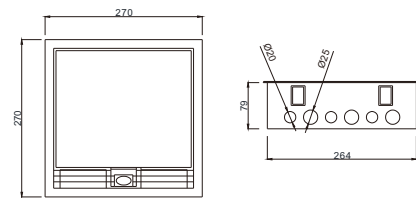
Outline Drawing:



SCF-A01-86

Panel Material	PC		
Panel Dimension (mm)	270x270		
Cutout (mm)	264x264		
Capacity Of Modules	3compartments/45mm type		
G.W/CTN(KGS)	MEASUREMENT/CTN(CM)	TOTAL(M ³)	Set/CTN
22	59*31*28	0.0512	6

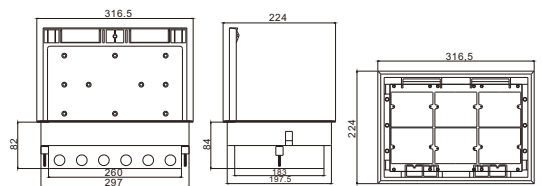
Outline Drawing:



HTD-627C

Panel Material	PC		
Panel Dimension (mm)	224x316.5		
Capacity Of Modules	3compartments/45mm type		
G.W/CTN(KGS)	MEASUREMENT/CTN(CM)	TOTAL(M ³)	Set/CTN
24	59*31*28	0.0512	6

Outline Drawing:



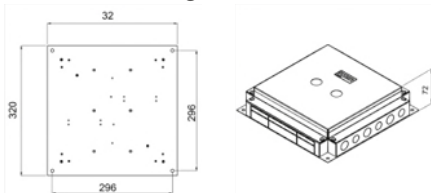
SCF: Underfloor/Raised floor box

SCF-F01



Panel Material	PC		
Panel Dimension (mm)	320x320		
Cutout (mm)			
Capacity Of Modules	3compartments/45mm type		
G.W/CTN(KGS)	MEASUREMENT/CTN(CM)	TOTAL(M ³)	Set/CTN
22	59*31*28	0.0512	6

Outline Drawing:

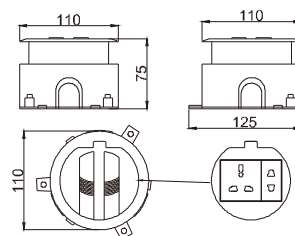


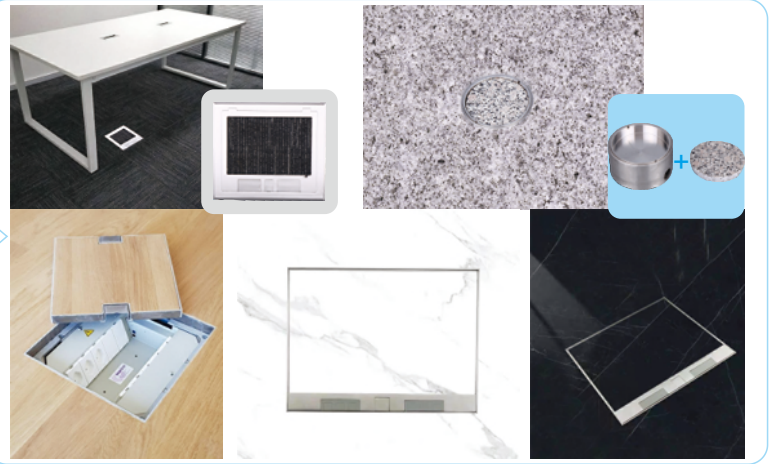
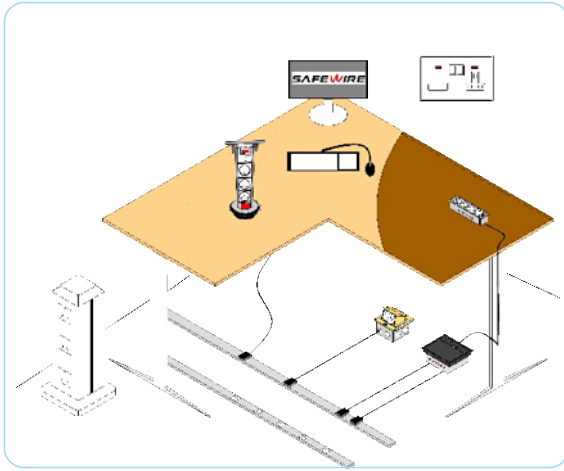
HTD-610S



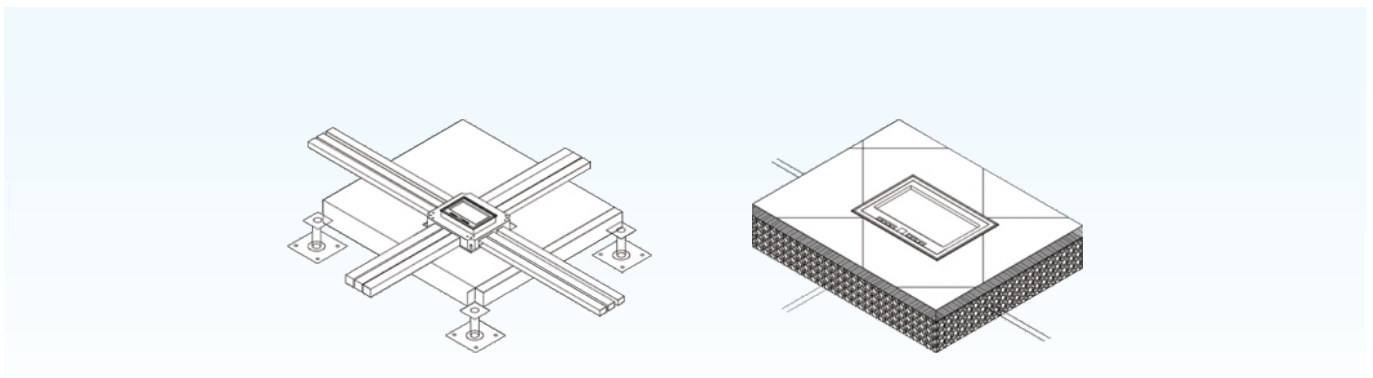
Panel Material	ABS		
Panel Dimension (mm)	Ø110		
Cutout (mm)	80x80		
Capacity Of Modules	3way 45modules		
G.W/CTN(KGS)	MEASUREMENT/CTN(CM)	TOTAL(M ³)	Set/CTN
3.7	44.5*30.5*21	0.285	12

Outline Drawing:

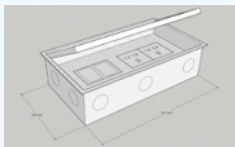




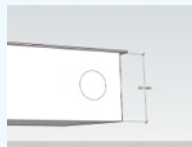
Applicable installation conditions



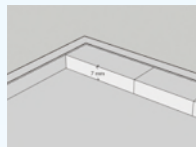
Customization design & production



① Dimension



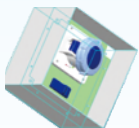
② Height



③ Cavity (depth)



④ Plug clearance
(Height of lid to support)



A) MCB + CEE socket



F4



F11B



F15B



F16B



HT-146TS
C) Switch socket



HT-86SS



D) Consigned Electric
Allessores by client Example

Various mounting card frames are available



Custom Mounting Plates



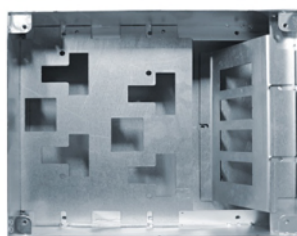
Installation Angle can be customized



Horizontal installation

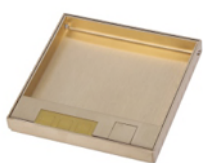


Side installation



Horizontal + side installation

The installation panel color is optional



Brass



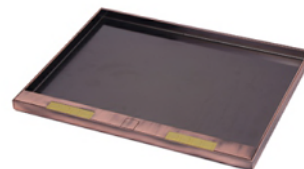
Black



Gold



Stainless steel



Bronze

Product panel style is optional.



Flush type



Embedded material type



Flush embeddable material type

POB: Heavy Duty Floor box



HTD-120A-K/KP

Panel Material	Brass alloy/Stainless steel
Panel Dimension (mm)	120*120



HTD-120B-K/KP

Panel Material	Brass alloy/Stainless steel
Panel Dimension (mm)	120*120



HTD-146K/KP-B

Panel Material	Brass alloy/Stainless steel
Panel Dimension (mm)	150*150



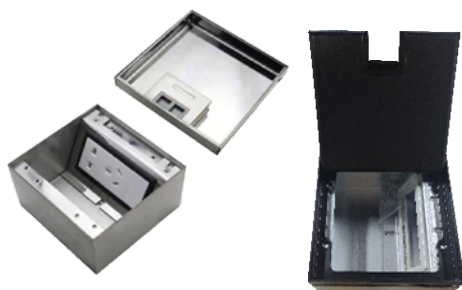
HTD-146K/KP-86

Panel Material	Brass alloy/Stainless steel
Panel Dimension (mm)	146*146



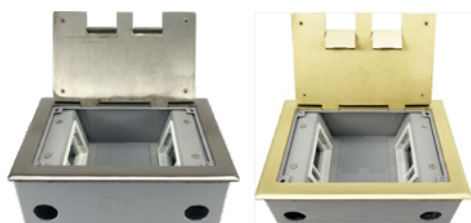
HTD-130CK-B

Panel Material	Stainless steel
Panel Dimension (mm)	130*130



HTD-130-CK

Panel Material	Stainless steel
Panel Dimension (mm)	130*130



HTD-145CK/CKP

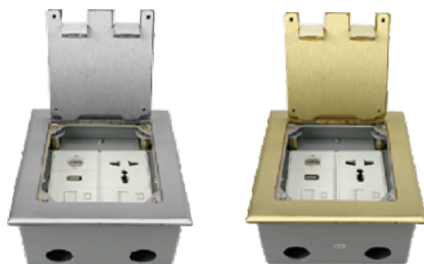
Panel Material	Brass alloy/Stainless steel
Panel Dimension (mm)	210*145



HTD-145K/KP

Panel Material	Brass alloy/Stainless steel
Panel Dimension (mm)	210*145

POB: Heavy Duty Floor box



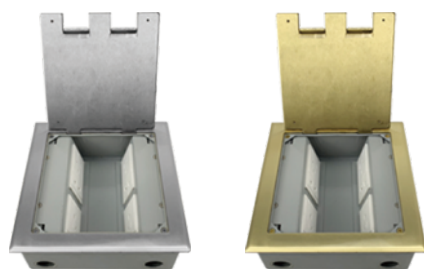
HTD-146K/KP-45

Panel Material	Brass alloy/Stainless steel
Panel Dimension (mm)	146*146



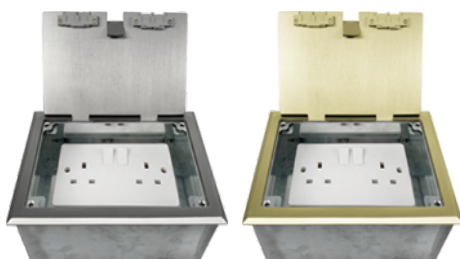
HTD-180K/KP

Panel Material	Brass alloy/Stainless steel
Panel Dimension (mm)	180*180



HTD-210CK/CKP

Panel Material	Brass alloy/Stainless steel
Panel Dimension (mm)	210*210



HTD-210K/KP-86

Panel Material	Brass alloy/Stainless steel
Panel Dimension (mm)	210*210

POB: Heavy Duty Floor box



HTD-210K/KP

Panel Material	Brass alloy/Stainless steel
Panel Dimension (mm)	210*210



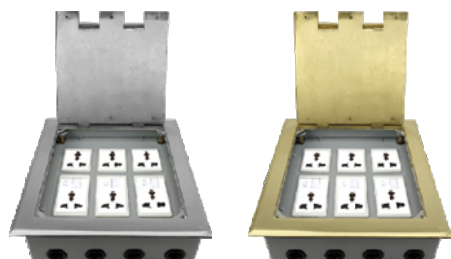
HTD-210C

AS Panel Material	Stainless steel or brass
Panel Dimension (mm)	210*210



HTD-250K/KP-86

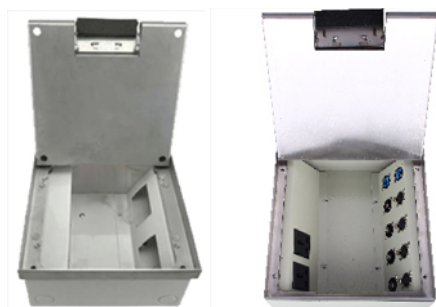
Panel Material	Brass alloy/Stainless steel
Panel Dimension (mm)	250*250



HTD-250K/KP

Panel Material	Brass alloy/Stainless steel
Panel Dimension (mm)	250*250

POB: Heavy Duty Floor box



HTD-250CK

Panel Material	Stainless steel
Panel Dimension (mm)	250*250



HTD-320KP-45

Panel Material	Stainless steel
Panel Dimension (mm)	320*230



HTD-320CKP-45

Panel Material	Stainless steel
Panel Dimension (mm)	320*230



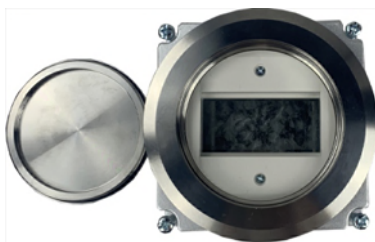
HTD-320CKP-86

Panel Material	Stainless steel
Panel Dimension (mm)	320*230



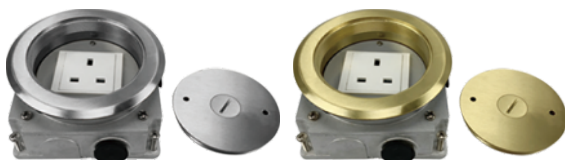
HTD-127ZAP

Panel Material	Stainless steel
Panel Dimension (mm)	127*127



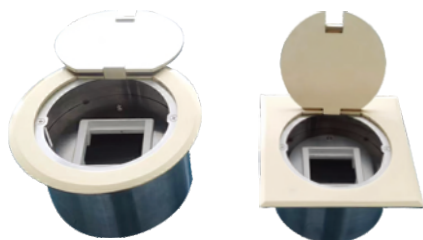
HTD-130LK/LXP-120

Panel Material	Brass alloy/Stainless steel
Panel Dimension (mm)	φ 140



HTD-130LK/LXP-45

Panel Material	Brass alloy/Stainless steel
Panel Dimension (mm)	φ 130



HTD-140YK/YKP

Panel Material	Brass alloy/Stainless steel
Panel Dimension (mm)	Φ140



HTD-SW-120/130/150

Panel Material	Stainless steel
Panel Dimension (mm)	120*120



HTD-LD-A

AS Panel Material	Brass alloy/Stainless steel
Panel Dimension (mm)	100*130



HTD-120-AV



HTD-220-AV



HTD-160LX



HTD-210-AV



HTD-146-I

POB: Heavy Duty Floor box



SF-DBAV-01

AS Panel Material	Stainless steel
Panel size(mm)	125*125*90
Bottom box size(mm)	105*105*90



SF-DBAV-02

AS Panel Material	Stainless steel
Panel size(mm)	225*125*90
Bottom box size(mm)	205*105*90



SF-DBAV-03

AS Panel Material	Stainless steel
Panel size(mm)	320*125*90
Bottom box size(mm)	300*105*90



SF-DBAV-04

AS Panel Material	Stainless steel
Panel size(mm)	225*220*90
Bottom box size(mm)	205*220*90

POB: Heavy Duty Floor box



SF-DBAV-06

AS Panel Material	Stainless steel
Panel size(mm)	320*220*90
Bottom box size(mm)	300*200*90



SF-DBAV-08

AS Panel Material	Stainless steel
Panel size(mm)	415*220*90
Bottom box size(mm)	395*200*90

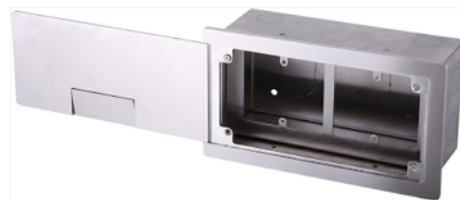


SF-DBAV-12

AS Panel Material	Stainless steel
Panel size(mm)	415*320*90
Bottom box size(mm)	395*300*90



SF-21A/B



SF-22A/B

POB: Heavy Duty Floor box



SF-23A/B



SF-26A/B



SF-DBMI-01

AS Panel Material	iron spray paint
Panel Dimension (mm)	200*260*120mm
Cutout (mm)	10*15cm
Capacity Of Modules	Red(RAL2005), Grey



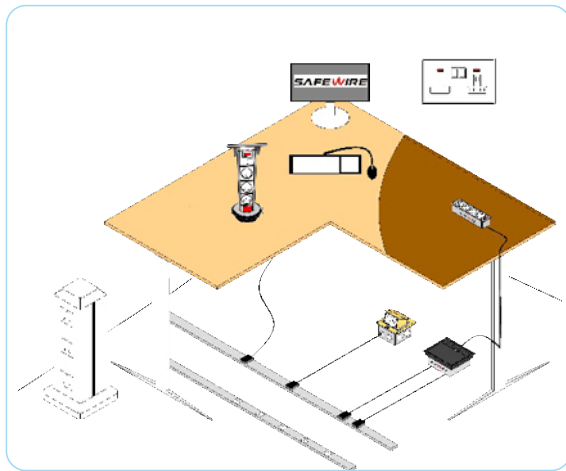
SF-DBMU-01

AS Panel Material	Iron spray paint, Cold plate
Panel Dimension (mm)	130*130*85mm



SF-DBMU-02

AS Panel Material	Iron spray paint, Cold plate
Panel Dimension (mm)	130*130*85mm



SOB Features

1. 3/4/6/8 ways 45*45mm modules inside.

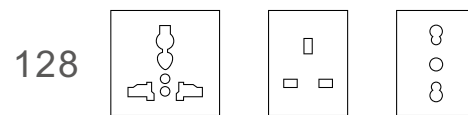
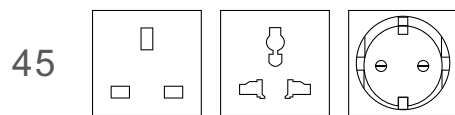
2. Silver/Black/Brass/White/Nickel etc. colour.



3. More International Socket, multimedia and Data accessories: BS/EU/UL/Universal/SAA Standard.

1. 45*45mm Modules

2. 128 Type series



Advantage of Safewire floorbox

1. Color Sample (Remark: or refer to RAL or Pantone):

Br: Brass H62	P: stainless 304	L: aluminum alloy	Ch: chrome	NK: nickel	Zl: zinc	Pb: powder pearl black	BZ: bronze

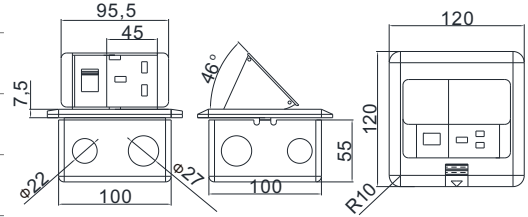
SOB: Serviced Outlet Box



FD201/201L

AS Panel Material	Brass alloy/Alu alloy		
Panel Dimension (mm)	120*120		
Cutout (mm)	103*103		
Capacity Of Modules	3 ways 45 type modules		
G.W/CTN(KGS)	MEASUREMENT/CTN(CM)	TOTAL(M ³)	Set/CTN
14.15	43*27*26.5	0.0308	20

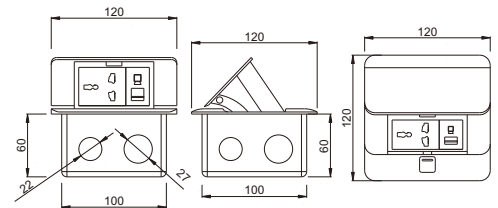
Outline Drawing:



FD-221

AS Panel Material	Brass alloy		
Panel Dimension (mm)	120*120		
Cutout (mm)	103*103		
Capacity Of Modules	3 ways 45 type modules		
G.W/CTN(KGS)	MEASUREMENT/CTN(CM)	TOTAL(M ³)	Set/CTN
18	41.5*27*27	0.0303	20

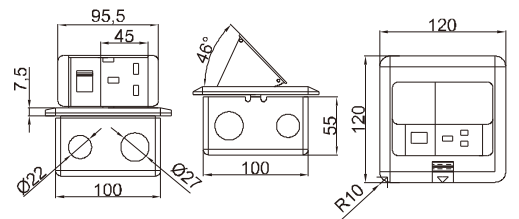
Outline Drawing:



HTD-1/1L

AS Panel Material	Brass alloy		
Panel Dimension (mm)	120*120		
Cutout (mm)	103*103		
Capacity Of Modules	3 ways 45 type modules		
G.W/CTN(KGS)	MEASUREMENT/CTN(CM)	TOTAL(M ³)	Set/CTN
22.5	41.5*27*27	0.0303	15

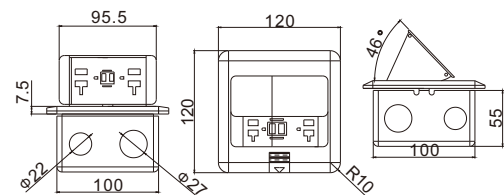
Outline Drawing:



HTD-J02L

AS Panel Material	Brass alloy/Alu alloy		
Panel Dimension (mm)	120*120		
Cutout (mm)	103x103		
Capacity Of Modules	GFCI module with USB port		
G.W/CTN(KGS)	MEASUREMENT/CTN(CM)	TOTAL(M ³)	Set/CTN
22.5	41.5*27*27	0.0303	15

Outline Drawing:



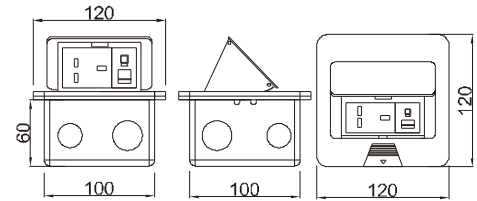
SOB: Serviced Outlet Box



HTD-2/2P

AS Panel Material	Brass alloy/Alu alloy		
Panel Dimension (mm)	120*120		
Cutout (mm)	105x105		
Capacity Of Modules	3 ways 45 type modules		
G.W/CTN(KGS)	MEASUREMENT/CTN(CM)	TOTAL(M ³)	Set/CTN
22.3	44*28*27.3	0.0336	20

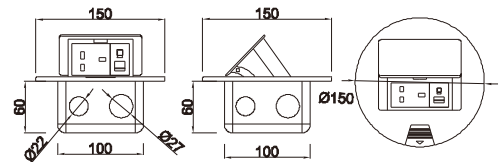
Outline Drawing:



HTD-3/3P

AS Panel Material	Brass alloy/Alu alloy		
Panel Dimension (mm)	Ø150		
Cutout (mm)	105*105		
Capacity Of Modules	3 ways 45 type modules		
G.W/CTN(KGS)	MEASUREMENT/CTN(CM)	TOTAL(M ³)	Set/CTN
115	41.5*32.5*32.5	0.0438	20

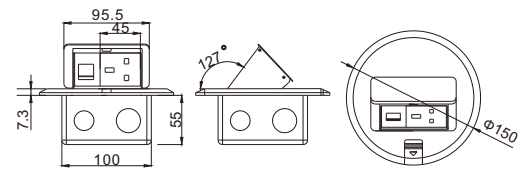
Outline Drawing:



HTD-7/7L

AS Panel Material	Brass alloy/Stainless alloy		
Panel Dimension (mm)	Ø150		
Cutout (mm)	103*103		
Capacity Of Modules	3 ways 45 type modules		
G.W/CTN(KGS)	MEASUREMENT/CTN(CM)	TOTAL(M ³)	Set/CTN
17.5	41.5*32.5*32.5	0.0438	20

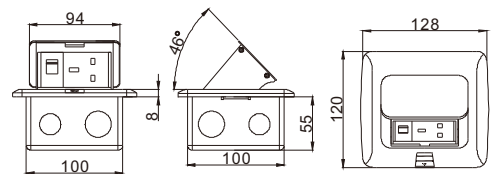
Outline Drawing:



HTD-18/18L

AS Panel Material	Brass alloy/Alu alloy		
Panel Dimension (mm)	128*120		
Cutout (mm)	103*103		
Capacity Of Modules	3 ways 45 type modules		
G.W/CTN(KGS)	MEASUREMENT/CTN(CM)	TOTAL(M ³)	Set/CTN
16.8	41.5*27*27	0.0303	20

Outline Drawing:



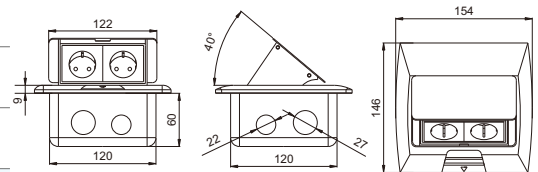
SOB: Serviced Outlet Box

HTD-331L



AS Panel Material	Aluminum alloy		
Panel Dimension (mm)	154*146		
Cutout (mm)	123*123		
Capacity Of Modules	4 ways 45 type modules		
G.W/CTN(KGS)	MEASUREMENT/CTN(CM)	TOTAL(M ³)	Set/CTN
15	49*32*22	0.0345	12

Outline Drawing:

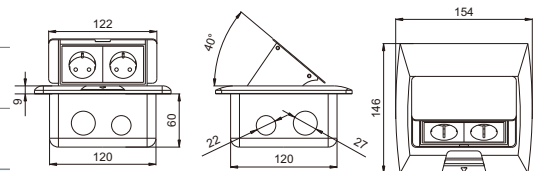


HTD-28/28L



AS Panel Material	Brass alloy/Alu alloy		
Panel Dimension (mm)	154*146		
Cutout (mm)	123*123		
Capacity Of Modules	4 ways 45 type modules		
G.W/CTN(KGS)	MEASUREMENT/CTN(CM)	TOTAL(M ³)	Set/CTN
15	49*32*22	0.0345	12

Outline Drawing:

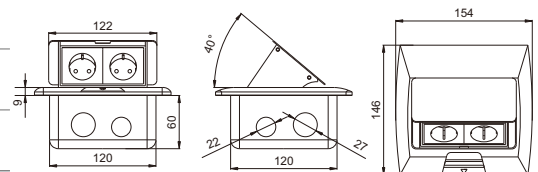


HTD-381L



AS Panel Material	Aluminum alloy		
Panel Dimension (mm)	154*146		
Cutout (mm)	123*123		
Capacity Of Modules	4 ways 45 type modules		
G.W/CTN(KGS)	MEASUREMENT/CTN(CM)	TOTAL(M ³)	Set/CTN
15	49*32*22	0.0345	12

Outline Drawing:



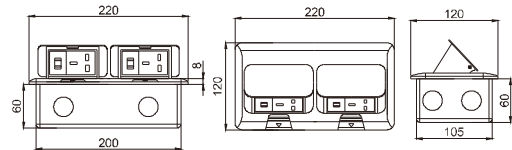
SOB: Serviced Outlet Box

HTD-1602/1602L



AS Panel Material	Brass alloy/Alu alloy		
Panel Dimension (mm)	220*120		
Cutout (mm)	202x107		
Capacity Of Modules	6 ways 45 type modules		
G.W/CTN(KGS)	MEASUREMENT/CTN(CM)	TOTAL(M ³)	Set/CTN
17.6	44*24*27	0.0285	10

Outline Drawing:

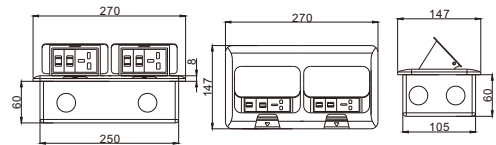


HTD-2602/2602L/W/B



AS Panel Material	Brass alloy/Alu alloy		
Panel Dimension (mm)	270*147		
Cutout (mm)	253*108		
Capacity Of Modules	8 ways 45 type modules		
Color	silver / golden / white / black		
G.W/CTN(KGS)	MEASUREMENT/CTN(CM)	TOTAL(M ³)	Set/CTN
96.5	45*28.5*31.5	0.0404	10

Outline Drawing:

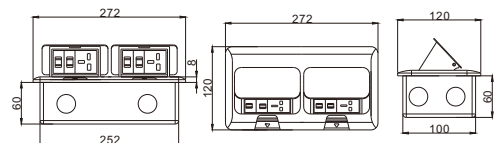


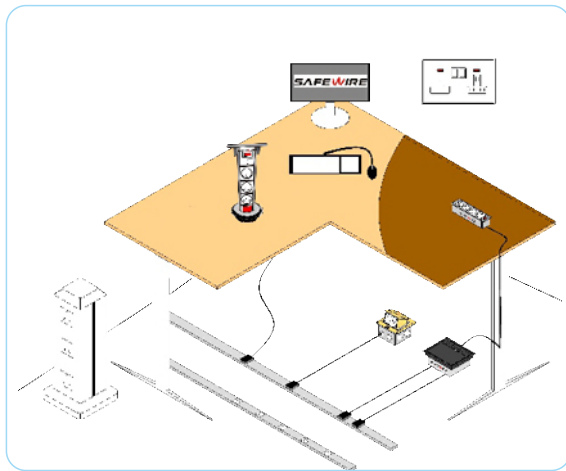
HTD-3602/3602L/W/B



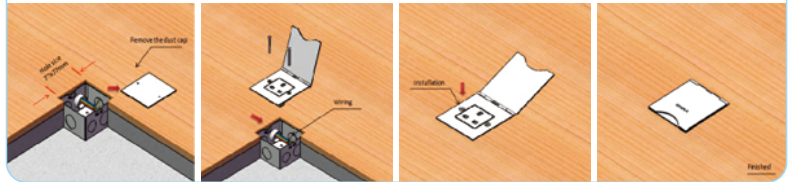
AS Panel Material	Alu alloy		
Panel Dimension (mm)	272*120		
Cutout (mm)	252*100		
Capacity Of Modules	8 ways 45 type modules		
Color	Silver		
G.W/CTN(KGS)	MEASUREMENT/CTN(CM)	TOTAL(M ³)	Set/CTN
96.5	45*28.5*31.5	0.0404	10

Outline Drawing:



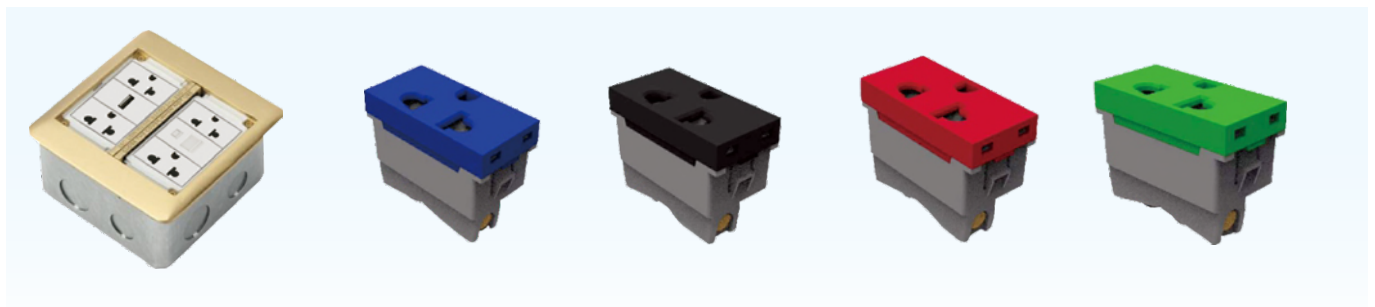


Installation



FUS Series Features

1. More capacity : 6*power socket outlet.



2. Silver/Black/Brass/White/Nickel etc . color



Safewire floorbox IP level certificated

TÜV Rheinland (China) Ltd
Member of TÜV Rheinland Group

Felife Technology Co., Ltd. Date : 26.11.2018
Our Ref.: WJ0434 001 Your Ref.: E.T.

No. 14, Chushui Middle R.O.,
Yong'an Industrial Area, Xianju
County,
Taizhou City, Zhejiang Province,
P. R. China

Ref : AN Certificate of Conf. Low Voltage D.

Type of Equipment : Box for Electrical Accessories-Floor Box
Model: Safewire IP55
Certificate No. : AN 50423434 0001
Report No. : 5022299 001

Dear Ladies and Gentlemen,

We herewith confirm that a sample of the above mentioned technical equipment has been tested and was found to be in accordance with the relevant requirements.

We would please find your Certificate of Conformity.

We appreciate your kind support and would like to offer our assistance and continuous services in the future.

With kind regards,
Certification Body
[Signature]
Shao Xinhua

Enclosure

中国合格评定国家认可委员会 认证证书编号: CNAS 060400 001 15000 01

TÜV Rheinland (China) Ltd. 地址: 浙江省台州市仙居县永安工业园区14号
111551 仙居县 电话: 86-576-8501 2000 传真: 86-576-8501 2002
111551 仙居县 邮编: 311551 网址: www.tuv.com.cn 邮箱: china@tuv.com.cn

CERTIFICATE

of Conformity
Low Voltage Directive 2014/35/EU

Registration No.: AN 50423434 0001
Report No.: 5022299 001

Holder: Felife Technology Co., Ltd.
No. 14, Chushui Middle R.O.,
Yong'an Industrial Area, Xianju County,
Taizhou City, Zhejiang Province,
P. R. China

Product: Empty Enclosure
(Box for Electrical Accessories-Floor Box)

Identification: Type: Safewire IP55
Model: Safewire IP55
Certificate No.: AN 50423434 0001
Report No.: 5022299 001

This certificate of conformity is based on an evaluation of a sample of the above mentioned technical equipment and accessories as per the License Holder's request. This is to verify that the tested sample is in conformity with Annex I of Council Directive 2014/35/EU, subject to the Low Voltage Directive. This certificate does not imply acceptance of the serial production of the product and does not permit the use of a TÜV Rheinland mark of conformity. The holder of the certificate is authorized to use this certificate in connection with the EC declaration of conformity according to Annex IV of the Directive.

Certification Body
[Signature]
Shao Xinhua

Date: 26.11.2018

TÜV Rheinland LGA Products GmbH - Tillystraße 2 - 90431 Nürnberg

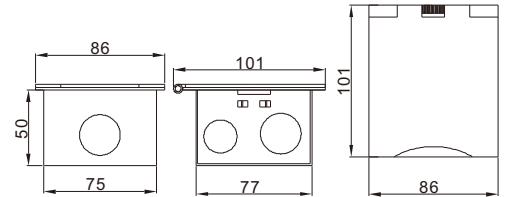
CE The CE marking may be used if all relevant and applicable EC Directives are complied with. CE

HTD-101/101P



AS Panel Material	Brass alloy/Stainless-Steel		
Panel Dimension (mm)	86*101		
Cutout (mm)	78*80		
Capacity Of Modules	2 ways 45 type modules		
G.W/CTN(KGS)	MEASUREMENT/CTN(CM)	TOTAL(M ²)	Set/CTN
24	55*34*24	0.0449	50

Outline Drawing:

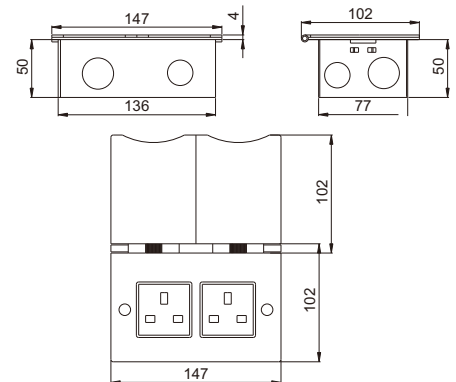


HTD-102/102P



AS Panel Material	Brass alloy/Stainless-Steel		
Panel Dimension (mm)	147*102		
Cutout (mm)	138x80		
Capacity Of Modules	4 ways 45 type modules		
G.W/CTN(KGS)	MEASUREMENT/CTN(CM)	TOTAL(M ²)	Set/CTN
23.2	36*33.5*35	0.0422	25

Outline Drawing:

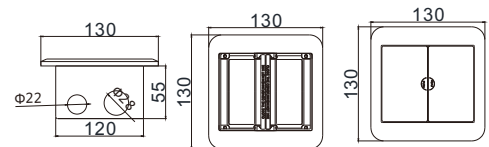


HTD-13



AS Panel Material	Alu alloy/Stainless steel		
Panel Dimension (mm)	134*134		
Cutout (mm)	122*122		
Capacity Of Modules	6 ways 45 modules		

Outline Drawing:

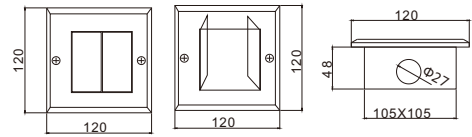


HTD-11P



AS Panel Material	Brass alloy/Stainless steel		
Panel Dimension (mm)	120*120		
Cutout (mm)	68*68		
Capacity Of Modules	3 ways 45 type modules		
G.W/CTN(KGS)	MEASUREMENT/CTN(CM)	TOTAL(M ³)	Set/CTN
14.25	32*29*32	0.0297	12

Outline Drawing:

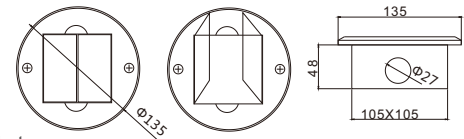


HTD-12P



AS Panel Material	Round shape Brass H62/stainless 304		
Panel Dimension (mm)	φ135mm		
Cutout (mm)	105*105		
Capacity Of Modules	3 ways 45 type socket or 1* 128 type socket		
G.W/CTN(KGS)	MEASUREMENT/CTN(CM)	TOTAL(M ³)	Set/CTN
115	41.5*32.5*32.5	0.0438	20

Outline Drawing:

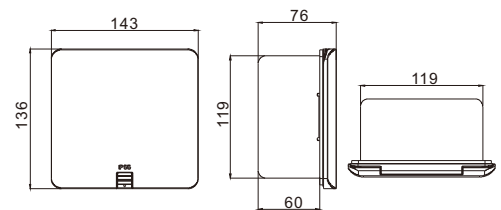


FD-777-A/AP



AS Panel Material	Brass alloy		
Panel Dimension (mm)	143*136		
Cutout (mm)	122*122		
Capacity Of Modules	4 ways 45 modules		
G.W/CTN(KGS)	MEASUREMENT/CTN(CM)	TOTAL(M ³)	Set/CTN
40	52*35*24	0.0437	16

Outline Drawing:

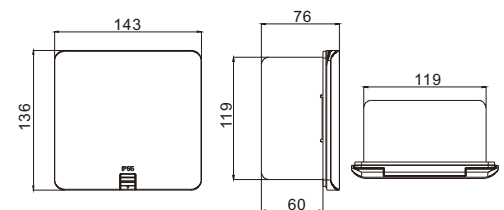


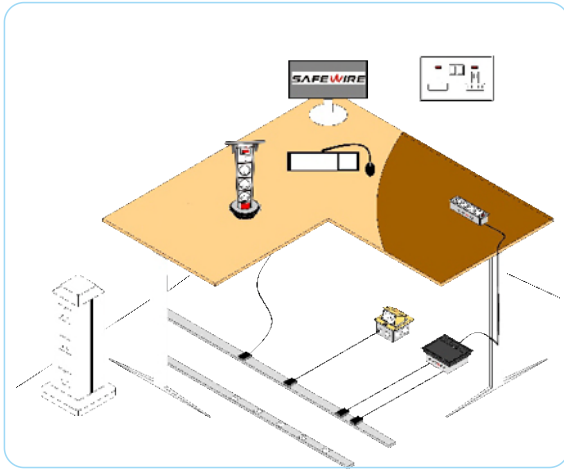
FD-777-B/BP



AS Panel Material	Brass alloy & nickel plated brass		
Panel Dimension (mm)	143*136		
Cutout (mm)	122*122		
Capacity Of Modules	3 ways 128 type modules		
G.W/CTN(KGS)	MEASUREMENT/CTN(CM)	TOTAL(M ³)	Set/CTN
14.25	32*29*32	0.0297	12

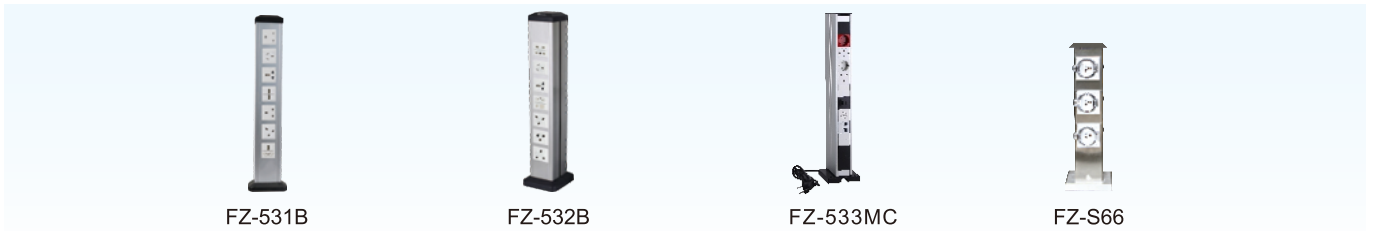
Outline Drawing:





MCS Series Features

1. Easy plug in/out:



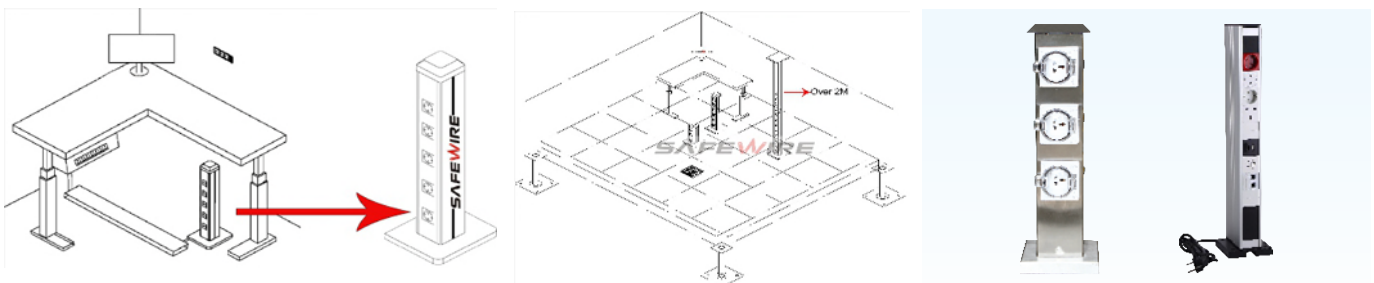
2. ODM Design for height & Input



3. Supply with Wire & Input cable



4. Safewire's Mini-column Application in different system



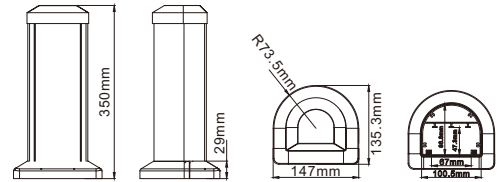
MCS: Mini-Columns Socket & utility column

FZ-531A



Material	Aluminum alloy		
Height Of Product(mm)	350		
Power Supply Side	Single side		
Capacity Of Modules	8 ways 45 modules		
G.W/CTN(KGS)	MEASUREMENT/CTN(CM)	TOTAL(M ³)	Set/CTN
10.3	53.5*37*34.5	0.068	6

Outline Drawing:

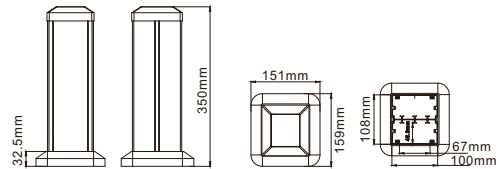


FZ-532A



Material	Aluminum alloy		
Height Of Product(mm)	350		
Power Supply Side	Dual side		
Capacity Of Modules	16 ways 45 modules		
G.W/CTN(KGS)	MEASUREMENT/CTN(CM)	TOTAL(M ³)	Set/CTN
17.5	53.5*37*34.5	0.068	6

Outline Drawing:

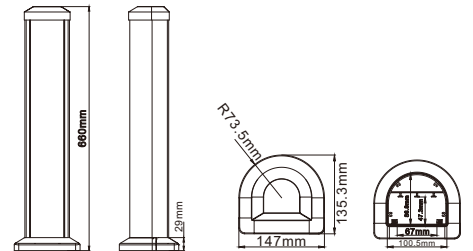


FZ-531B



Material	Aluminum alloy		
Height Of Product(mm)	660		
Power Supply Side	Single		
Capacity Of Modules	14 ways 45 modules		
G.W/CTN(KGS)	MEASUREMENT/CTN(CM)	TOTAL(M ³)	Set/CTN
17.5	52*34.5*68.5	0.123	12

Outline Drawing:

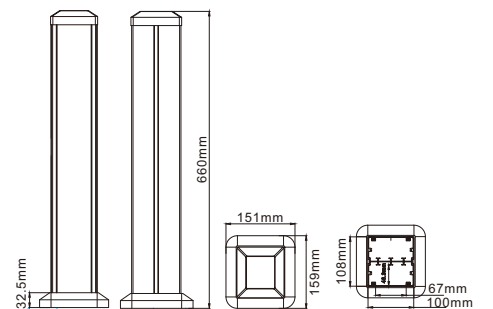


FZ-532B



Material	Aluminum alloy		
Height Of Product(mm)	660		
Power Supply Side	Dual side		
Capacity Of Modules	28 ways 45 modules		
G.W/CTN(KGS)	MEASUREMENT/CTN(CM)	TOTAL(M ³)	Set/CTN
17.5	52*34.5*68.5	0.123	12

Outline Drawing:

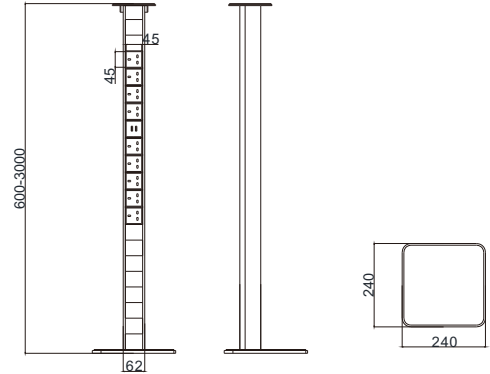


FZ-533MC



Material	Aluminum alloy		
Height Of Product(mm)	700-3000		
Bottom Base Size(mm)	240*240		
Capacity Of Modules	20ways 45 modules		
G.W/CTN(KGS)	MEASUREMENT/CTN(CM)	TOTAL(M ³)	Set/CTN
17.5	52*34.5*68.5	0.123	12

Outline Drawing:



FZ-533MC Highly customizable



0.7M high



3M high

FZ-S66



Material	Stainless steel 304		
Ip Protection Level	IP66		
Power Supply Side	Two side		
Capacity Of Modules	5 IP66 Waterproof case		
G.W/CTN(KGS)	MEASUREMENT/CTN(CM)	TOTAL(M ³)	Set/CTN
60.5	22*24*67	0.035	1

Outline Drawing:

